

ALLIA TSR-6032 (3-pieces)

Model number:

107000S

Dimensions: 60" x 33" x 88"

Installation: Alcove

Material: Acrylic



Standard Features:

- 1 or 3-Piece tub shower with integrated roofcap
- Wide 3-level corner shelves
- Standard 12" colour-coordinated grab bar
- Comes with an access panel when equipped with a system
- Optional grab bars and removable seat available
- Unique feature: 3 in. Above-the-Floor Rough

Product characteristics:

- Multi-Piece Unit
- Easy Installation
- Aging in place

Systems:

- Whirlpool
- Combined Whirlpool/Aeroeffect
- Aeroeffect

Warranty:

25 Years

Standard colors:



White (001)

Certifications

MAAX products adhere to one or more of the following certifications:



Recommended products (Visit our website for a complete list of our recommended doors)

No	Description
134660	Kameleon SC Sliding Tub Door 51-55 x 57 in. 6 mm
134560	Kameleon Sliding Tub Door 51-55 x 57 in. 6 mm
137500	Edge Tub Shield 30 x 55 ½ in. 6 mm

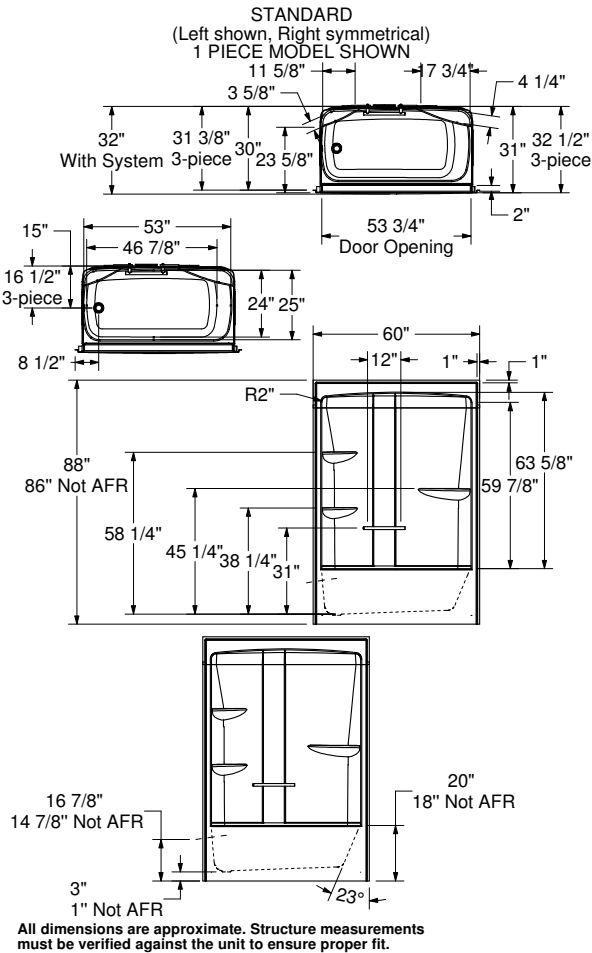
Options (Visit our website for a complete list of our options)

No	Description
<input type="checkbox"/> OPT 20410	12# Ergonomic Grab Bar
<input type="checkbox"/> OPT 20203-B	18" Modern straight horizontal grab bar on back wall
<input type="checkbox"/> OPT 20203-L	18" Modern straight vertical grab bar on left wall
<input type="checkbox"/> OPT 20203-R	18" Modern straight vertical grab bar on right wall
<input type="checkbox"/> OPT 20204-B	24" Modern straight horizontal grab bar on back wall

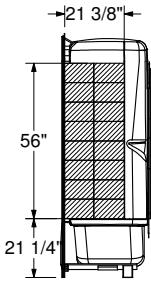
ALLIA TSR-6032 (3-pieces)

Model number:	107000S
---------------	---------

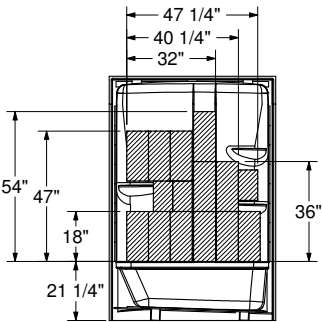
Dimensions:	60" x 33" x 88"	Installation:	Alcove	Material:	Acrylic
-------------	-----------------	---------------	--------	-----------	---------



OPTIONAL REINFORCEMENT
(Left shown, Right symmetrical)



OPTIONAL REINFORCEMENT
(Back Wall)



Dimensions:

60 x 33 x 88 in.
(1524 x 838 x 2235 mm)

Water capacity:

49 gallons - 185 liters

Weight:

173 lbs - 78 kg

Bathing well:

46 7/8 X 25 in.
(1191 X 635 mm)

Deep sump height:

15 3/8 in. - 391 mm

Drain location:

Left

Right

Project:	
Contractor:	
Representative:	
Date:	
Tel:	
Notes:	