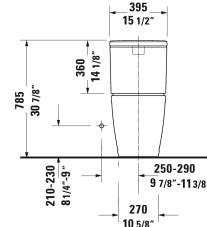
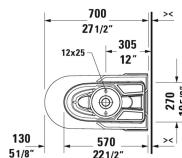
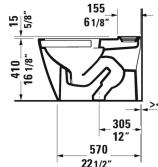
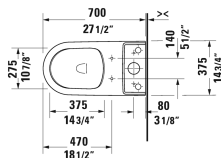


**D-Neo Two-Piece toilet Duravit Rimless® ♿ # 200601..00 / 200601..85 / 200601..00 / 200601..85**

< 14 3/4" Inch >



Two-Piece toilet Duravit Rimless®	Dimension	Weight	Order number
syphonic, 12" rough-in, for vertical outlet, cUPC® listed*, WaterSense® listed, (without tank)			
<b>Colors</b>			
00 White 20 HygieneGlaze (an antibacterial ceramic glaze that provides almost indefinite effectiveness)			
<b>Variant</b>			
♣ 1.32/0.92 gpf, ADA height	14 3/4" x 27 1/2" Inch	95.9 lb	200601..00
♣ 1.28 gpf, ADA height	14 3/4" x 27 1/2" Inch	95.9 lb	200601..85
♣ 1.32/0.92 gpf, ADA height	14 3/4" x 27 1/2" Inch	95.9 lb	200601..00
♣ 1.28 gpf, ADA height	14 3/4" x 27 1/2" Inch	95.9 lb	200601..85
Mounting set for One-Piece and Two-Piece toilets, outlet 3/8" - male thread, wall connection 1/2" - female thread, 1/2", North American version	17 3/4" Inch	1.1 lb	001417
<b>Suitable products</b>			
Toilet seat and cover removable, hinges stainless steel, without slow close, inside color White, outside color White,			002621
Toilet seat and cover removable, hinges stainless steel, with slow close, inside color White, outside color White,			002629
Tank with dual flush piston valve, top flush, for bottom left supply, 1.32/0.92 gpf, 15 1/2" x 14 1/6" Inch	15 1/2" x 14 1/6" Inch		094420
Tank for bottom left supply, 1.28 gpf, 15 1/2" x 14 1/6" Inch	15 1/2" x 14 1/6" Inch		094421

All drawings contain the necessary measurements which are subject to standard tolerances. They are stated in inch & mm and are non-binding. Exact measurements, in particular for customized installation scenarios, can only be taken from the finished ceramic piece.