



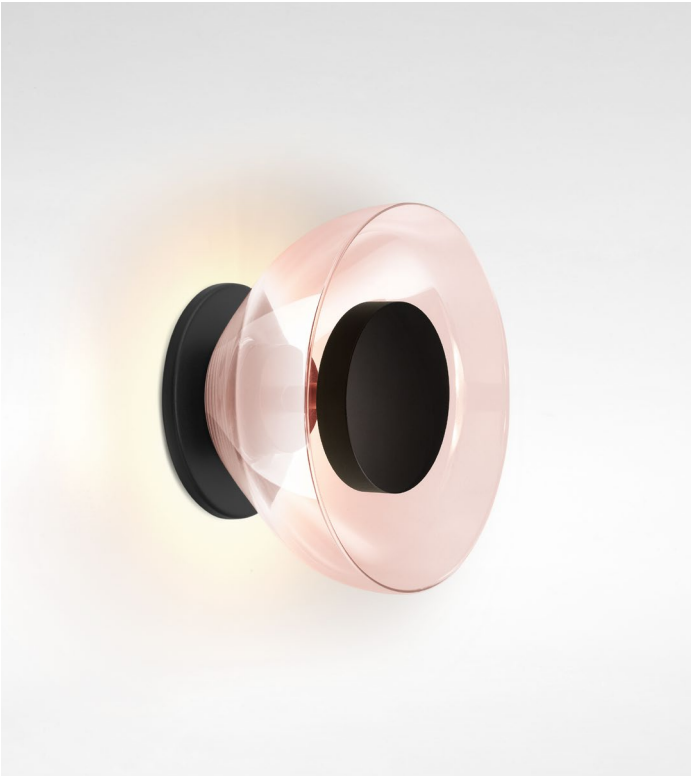
Aura

Joan Gaspar

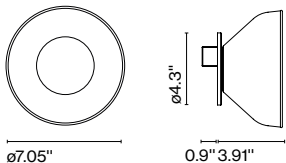


marset

This decorative lamp, which provides outstanding light while turn on but stands out beautifully while off as well, was inspired by the traditional glass carafe, a mainstay of households the world over.

The Aura follows an emotional design, because of what glass means in the collective memory, as well as a rational and contemporary design because it draws on LED technology to achieve efficiency and subtlety.



Aura

Code	Finish	Electrical Rating: 90-264VAC 50-60Hz 8.7W	
A676-008	○ Transparent	Luminaire: 448lm	
A676-009	● Opal	CCT: 2700K	
A676-010	● Smoked	CRI: 90	
A676-012	● Copper		
Dimmable: No			
Materials			
Shade: Blown Glass			
Structure: Polycarbonate			
Dissipater: Aluminum			
Product Notes: Wall mount only			
Structure in black, except for the opal version, with structure in white.			
Suitable for damp locations			
LED included			
 			

Aura Plus

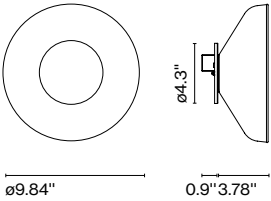
Code	Finish	Electrical Rating: 90-264VAC 50-60Hz 8.7W
A676-019	○ Transparent	Luminaire: 448lm
A676-020	● Opal	CCT: 2700K
A676-021	● Smoked	CRI: 90
A676-022	● Copper	

Dimmable: No

Materials
Shade: Blown Glass
Structure: Polycarbonate
Dissipater: Aluminum

Product Notes: Wall mount only
Structure in black, except for the opal version, with structure in white.

Suitable for damp locations



⚠ WARNING. California Proposition 65 Warning for California Consumers. This product can expose you to chemicals including wood dust and lead which are known to the State of California to cause cancer or birth defects or other reproductive harm. For more information go to www.P65Warnings.ca.gov

marsetusa@marset.com
www.marset.com

Download
Photometric data file (LDT or IES)
2D, 3D, Photmetric Data
Assembly instructions