

# ALGORITHM

Design by Toan Nguyen.

# VIBIA

## Reference

**0872.**

## Application

Pendants

## Installation type

Recessed

## Description

Pendant light fitting designed by Toan Nguyen. Composed of a collection of hand blown glass spheres with LED light source suspended at different heights, anchored to the ceiling via a floating tubular structure.

## Diffuser

Polycarbonate diffuser

## Materials

Sphere: Blown glass  
Canopy: Steel  
Pendant structure: Steel  
Glass fastening: Aluminum

## Finishes

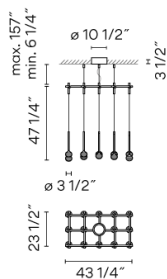


**0872-18** Black (ADAPTA RF 9913 WX)



**0872-93** White (RAL 9016)

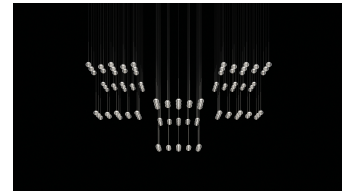
## Sketch



## Electrical characteristics

15 x LED 3.15W 1050mA

Total 47.3 W



**Light source:** 2700K CRI >80 4684.2 lm 99.13 lm/W

**Fixture:** 2322.75 lm 49.15 lm/W

**Driver included:** CC - Constant Current 1050 mA 120-277V 50/60Hz

**Electronic dimming:** 0-10V

**Optional dimming:** DALI or Lutron ECO

## Technical characteristics

- The steel cables that go from the structure to the ceiling are the only ones that allow the height of the lamp to be adjusted. The installation manual describes how to do this and how to cut the cables.
- Optional 10" stems included.

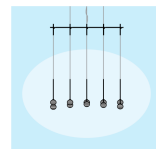
## Installation and assembly

Please see the installation manual

## Light distribution

### General lighting

Lamp for general lighting that equally distributes the light in all directions.



## Photometric data

Efficiency : 49.5%

Coordinate system : CG

Total flux : 4684.20 lm

Maximum value : 144.90 cd/klm

Light position : C=0.00 G=0.00

Symmetry on the planes : Double symmetrical

Isolux : Isolux (Floor)

Light position :

X=0.00m Y=0.00m Z=2.50m

## Certificates

