



Shower - Tara.
Volume Control - polished chrome
Article number: 36 310 892-00



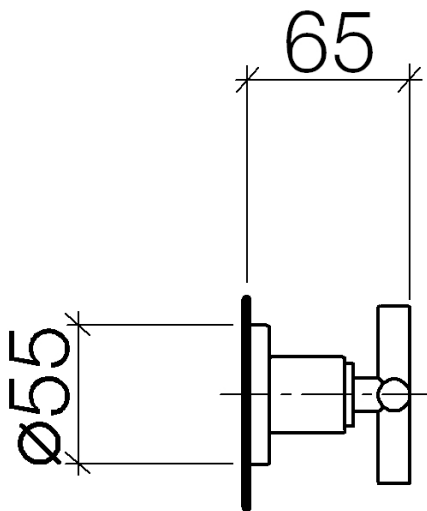
- Flange diameter 2-1/8"
- (ADA)



polished chrome

Accessory is required for this item.

Dimensional drawing



All dimensions in mm / inch = mm x 0,0394



Shower - Tara.

Volume Control - polished chrome

Article number: 36 310 892-00



Shower - Tara.

Volume Control - polished chrome

Article number: 36 310 892-00

Other surface finishes



platinum matte
36 310 892-06



platinum
36 310 892-08



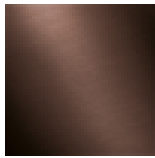
36 310 892-09



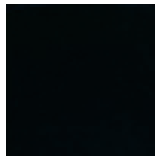
36 310 892-10



Dark Brass matte
36 310 892-16



Dark Bronze matte
36 310 892-17



black matte
36 310 892-33



Cyprum
36 310 892-49



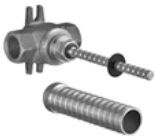
Dark Platinum matte
36 310 892-99

More custom finish options are available via special production (xTra Service). Please see our finish matrix for availability and pricing or contact a Dornbracht representative.



Shower - Tara.
 Volume Control - polished chrome
 Article number: 36 310 892-00

Required article

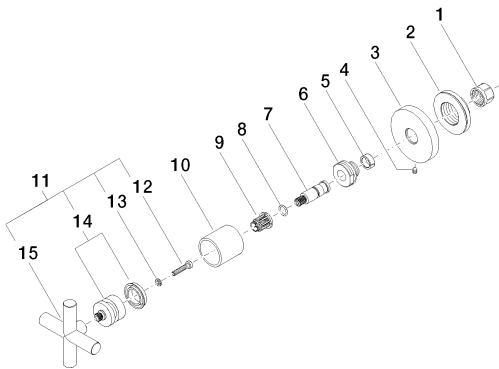


35 621 970-90 0010
 Rough for volume control
 clockwise-closing 1/2" -



35 622 970-90 0010
 Rough for volume control
 clockwise-closing 3/4" -

Spare parts list



Number	Item Number	Designation	Number of units
1	09 23 30 023 90	Mounting bracket -	1
2	09 21 02 108 90	Hood / sleeve -	1
3	09 27 89 108-00	Escutcheon - polished chrome	1
4	09 31 11 007 90	Mounting bracket -	1
5	09 14 15 020 90	Ring -	1
6	09 24 05 002 90	Nipple -	1
7	09 29 06 022 90	Wall connection -	1
8	09 14 10 060 90	Washer -	1
9	09 12 12 002 90	Upper part white -	1
10	09 21 02 144-00	Hood / sleeve - polished chrome	1
11	04 20 89 010 00-00	Handle - polished chrome	1
12	09 30 30 075 90	Mounting bracket -	1
13	09 30 11 029 90	Wall connection -	1
14	90 12 12 007 00-00	Handle - polished chrome	1
15	09 20 89 010-00	Handle - polished chrome	1