

DOMO

Design by Ramos & Bassols.

Reference

8201.

Application

Ceiling Fixtures

Installation type

Surface mounted

Description

Domo is a sleek, energy efficient classic cylindrical silhouette with a twist. The subtle asymmetric luminaire perfectly blends in to the ceiling treatment, making the Domo the ideal LED fixture for numerous applications. The fixture sits on a rotating plate, allowing 180° flexibility, and controllability of light. Also available as a downlight. Visit collection for details.

Diffuser

Polycarbonate diffuser

Materials

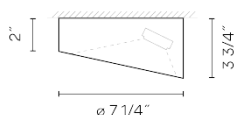
Canopy: Steel

Finishes



8201-03 White (RAL 9010)

Sketch



Electrical characteristics

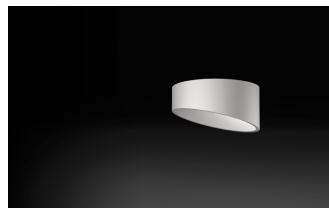
3 x LED 2.1W 700mA



Total 6.3 W



VIBIA



Light source: 2700K CRI >80 598 lm 94 lm/W

Fixture: 350 lm 56 lm/W

Driver included: CC - Constant Current 700 mA 120-277V 50/60Hz

Electronic dimming: 1-10V

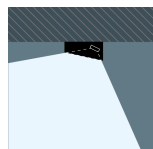
Installation and assembly

Please see the installation manual

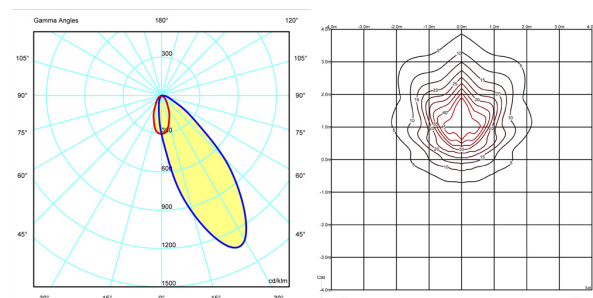
Light distribution

Highlight

Lamp used to highlight a specific element.



Photometric data



Certificates

