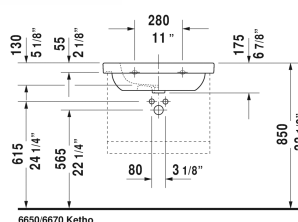
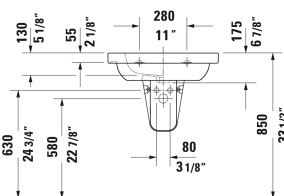
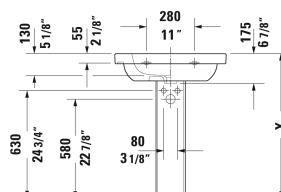
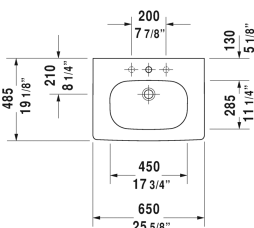


D-Code Furniture washbasin & # 03426500002 / 03426500302

| < 25 5/8" Inch > |



Furniture washbasin	Dimension	Weight	Order number
with overflow, with faucet deck, underside fully glazed, hardware included, wall-mounted, 25 5/8" Inch			
Colors			
00 White			
Variant			
●	25 5/8" x 19 1/8" Inch	44.3 lb	03426500002
● ● ●	25 5/8" x 19 1/8" Inch	44.3 lb	03426500302
Infobox			
Washbasin is not ADA compliant in combination with pedestal, siphon cover or metal console			
Space-saving siphon			
	1 1/4" Inch	0.9 lb	005076
Suitable products			
Vanity unit wall-mounted 1 pull-out compartment, for D-Code # 034265, 23 5/8" x 17 7/8" Inch	23 5/8" x 17 7/8" Inch		KT6670
Vanity unit wall-mounted 2 drawers, upper drawer including cut-out for siphon and siphon cover, for D-Code # 034265, 23 5/8" x 17 7/8" Inch	23 5/8" x 17 7/8" Inch		KT6650
Vanity unit wall-mounted 1 pull-out compartment, for D-Code # 034265, 23 5/8" x 17 7/8" Inch	23 5/8" x 17 7/8" Inch		DS6383
Vanity unit wall-mounted 2 drawers, upper drawer including cut-out for siphon and siphon cover, for D-Code # 034265, 23 5/8" x 17 7/8" Inch	23 5/8" x 17 7/8" Inch		DS6483

D-Code Furniture washbasin & # 03426500002 / 03426500302

| < 25 5/8" Inch > |

Vanity unit wall-mounted 1 pull-out compartment, compartment consists of glass dividers and 2 boxes (small/large), for D-Code # 034265, 23 5/8" x 18 1/8" Inch	23 5/8" x 18 1/8" Inch	XL6051
Vanity unit wall-mounted 1 pull-out compartment, for D-Code # 034265, 24 3/8" x 18 1/2" Inch	24 3/8" x 18 1/2" Inch	BR4045
Vanity unit wall-mounted 2 drawers, upper drawer including cut-out for siphon and siphon cover, for D-Code # 034265, 24 3/8" x 18 1/2" Inch	24 3/8" x 18 1/2" Inch	BR4145
Vanity unit floorstanding 2 pull-out compartments, for D-Code # 034265, 24 3/8" x 18 1/2" Inch	24 3/8" x 18 1/2" Inch	BR4425

All drawings contain the necessary measurements which are subject to standard tolerances. They are stated in inch & mm and are non-binding. Exact measurements, in particular for customized installation scenarios, can only be taken from the finished ceramic piece.