

SWAROVSKI

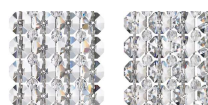
L I G H T I N G

CASSINI - SCHONBEK

CA3939

Both pure in shape and lavish, this dense crystal ring seems to float in mid-air, glittering like a halo. Inspired by the discovery of the Cassini Division in the rings of Saturn by Renaissance astronomer Giovanni Domenico Cassini in 1675, it is a celebration of the power of the solar system and the astral movements around the sun and moon. This is the extravagant design piece that will add oomph to your dining room and shine a light on your lounge or retail space.

OPTIONS



Spectra Crystal (A), CRYSTALS FROM SWAROVSKI (S)



-401

MORE CASSINI

CA2525 CA3724 CAC2525

- SWAROVSKI-LIGHTING.COM/SCHONBEK
- [VIEW](#)
- [CONNECT](#)
- [WHERE TO BUY](#)

SPECIFICATIONS

Type:	Pendant
Width/Length:	39in / 99cm
Height:	5.5in / 14cm
Chain Length:	144in / 366cm
Hang Weight:	62lbs / 27.9kg
Tier Count:	1
Light Source:	Halogen
Bulb Count:	28
Bulb Info:	(28) G9, 40 MAX, G9*

*Bulb Included **Bulb Not Included



SCHONBEK®