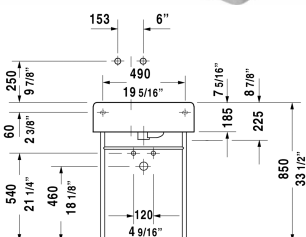
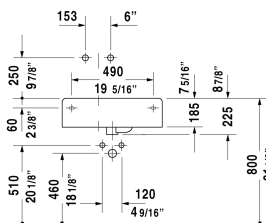
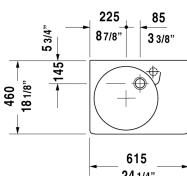


Scola Washbasin # 0684600000 / 0684600011

| < 24 1/4" Inch > |



| Washbasin | Dimension | Weight | Order number |
|--|------------------------|---------|--------------|
| with overflow, with faucet deck, underside fully glazed, hardware included, cUPC listed, bowl on left side | | | |
| | | | |
| Colors | | | |
| 00 White | | | |
| | | | |
| Variant | | | |
| ● with pre-marked faucet hole | 24 1/4" x 18 1/8" Inch | 51.4 lb | 0684600000 |
| ● | 24 1/4" x 18 1/8" Inch | 51.4 lb | 0684600011 |
| Sanitary ceramics with the special WonderGliss surface finish will remain clean and attractive-looking for a long time to come. When ordering WonderGliss please add a "1" as eleventh digit to the model number. | | | |
| | | | |
| Push button drain assembly for washbasins with overflow | 2" Inch | 0.8 lb | 005052 |
| Design Siphon | | 3.3 lb | 005036 |
| | | | |
| Suitable products | | | |
| Metal console for washbasin # 068460 and 068560, | | | 003059 |

All drawings contain the necessary measurements which are subject to standard tolerances. They are stated in inch & mm and are non-binding. Exact measurements, in particular for customized installation scenarios, can only be taken from the finished ceramic piece.