

LINK

Design by Ramón Esteve.

Reference

5373.

Application

Ceiling Fixtures

Installation type

Surface mounted

Description

Geometry as decor... The Link is a series of preconfigured geometric patterns that can be arranged across the canvas of a ceiling. These configurations have shallow profiles making them ideal for residential and hospitality settings or anywhere with

Diffuser

Acrylic diffuser

Materials

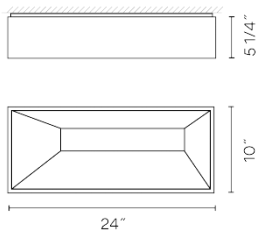
Body: Aluminum

Finishes

 **5373-03** White glossy (RAL 9016)

 **5373-18** Grey glossy (RAL 7016)

Sketch



Electrical characteristics

2 x PL-L 2G11 18W

AND

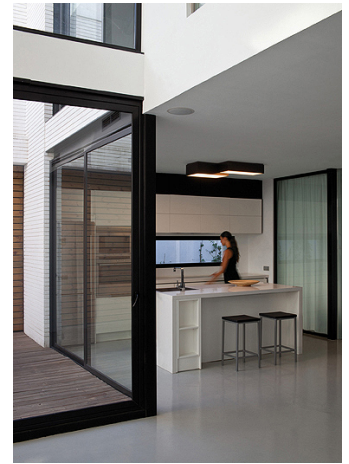
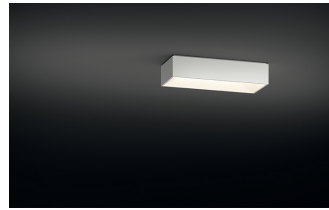
2 x PL-L 2G11 24W



Total 84.0 W



VIBIA



Light source: 6000 lm 6000 lm/W

Fixture: 1228 lm 0 lm/W

Driver included: 120-277V 50/60Hz

Electronic dimming: 0-10V

Technical characteristics

- Some manufactures lamps may not fit in the fixture. The following models have been tested and confirmed to fit: 18W- sylvania model # 20587; 24W -sylvania model # 20597. Always use the correct wattage.

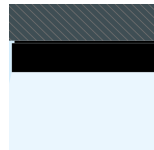
Installation and assembly

Please see the installation manual

Light distribution

General lighting

Lamp for general lighting that equally distributes the light in all directions.



Photometric data

Efficiency : 3%

Total flux : 6000.00

Maximum value : 67.98

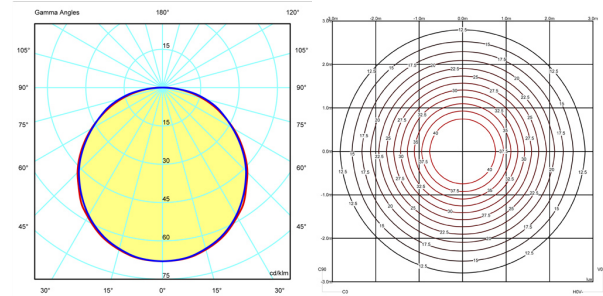
Light position : C=0.00 G=0.00

Symmetry on the planes : Double symmetrical

Isolux : Floor

Light position :

X=0.00m Y=0.00m Z=3.00m



Certificates

