



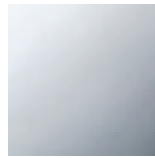
Bathtub - Deque

Two-way diverter for deck-mounted tub installation - polished chrome

Article number: 29 140 670-00

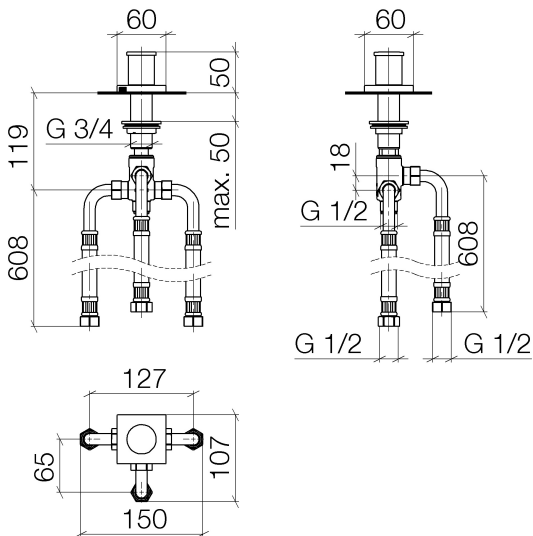


- Integrated diverter
- 1-1/4" hole diameter
- Flange 2-3/8" x 2-3/8"
- 1/2" connection
- Water flow rate limited to max. 17.1 gpm



polished chrome

Dimensional drawing



All dimensions in mm / inch = mm x 0,0394

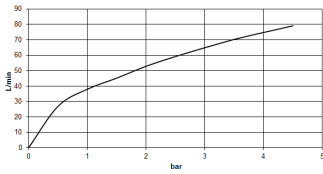


Bathtub - Deque

Two-way diverter for deck-mounted tub installation - polished chrome

Article number: 29 140 670-00

Flow rate chart





Bathtub - Deque

Two-way diverter for deck-mounted tub installation - polished chrome

Article number: 29 140 670-00

Other surface finishes



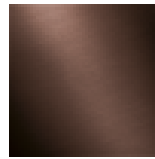
platinum matte
29 140 670-06



platinum
29 140 670-08



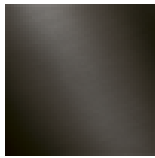
Dark Brass matte
29 140 670-16



Dark Bronze matte
29 140 670-17



Cyprum
29 140 670-49



Dark Platinum matte
29 140 670-99

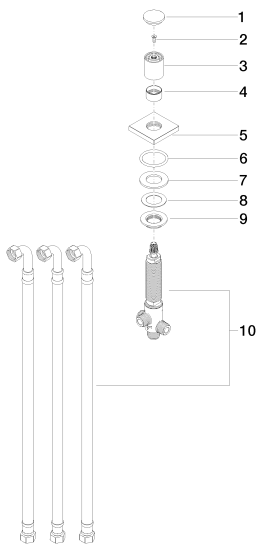
More custom finish options are available via special production (xTra Service). Please see our finish matrix for availability and pricing or contact a Dornbracht representative.

Bathtub - Deque

Two-way diverter for deck-mounted tub installation - polished chrome

Article number: 29 140 670-00

Spare parts list



Number	Item Number	Designation	Number of units
1	09 20 71 003-00	Cover - polished chrome	1
2	90 30 30 014 00 90	Mounting bracket -	1
3	09 20 71 002-00	Handle - polished chrome	1
4	09 16 01 012-00	Ring - polished chrome	1
5	09 27 67 006-00	Escutcheon - polished chrome	1
6	09 14 10 043 90	Washer -	1
7	09 14 05 014 90	Washer -	1
8	09 14 40 002 90	Washer -	1
9	09 23 10 004 90	Mounting bracket -	1
10	90 17 09 051 00 90	Conversion -	1