



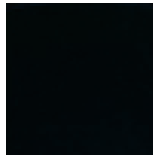
Sink - Tara.

Wall-mounted three-hole lavatory mixer without drain - black matte

Article number: 36 717 892-33 0010



- 9-1/2" Projection
- Rigid spout
- Round aerated stream
- Valve hole diameter 1-5/8"
- Spout hole diameter 1-5/8"
- Flange diameter 2-1/8"
- Water flow rate limited to max. 1.2 gpm
- lead-free
- (ADA)



black matte

Accessory is required for this item.

All dimensions in mm / inch = mm x 0,0394

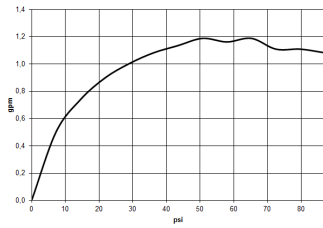


Sink - Tara.

Wall-mounted three-hole lavatory mixer without drain - black matte

Article number: 36 717 892-33 0010

Flow rate chart





Sink - Tara.

Wall-mounted three-hole lavatory mixer without drain - black matte

Article number: 36 717 892-33 0010

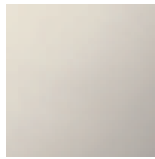
Other surface finishes



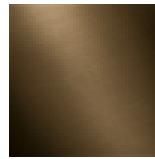
polished chrome
36 717 892-00 0010



platinum matte
36 717 892-06 0010



platinum
36 717 892-08 0010



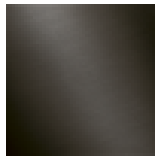
Dark Brass matte
36 717 892-16 0010



Dark Bronze matte
36 717 892-17 0010



Cyprum
36 717 892-49 0010



Dark Platinum matte
36 717 892-99 0010

More custom finish options are available via special production (xTra Service). Please see our finish matrix for availability and pricing or contact a Dornbracht representative.

Required article



35 707 970-90 0010
Rough for wall-mounted
faucet spout in center -



35 712 970-90 0010
Rough for wall-mounted
faucet flexible positioning -



35 713 970-90 0010
Rough for wall-mounted
faucet spout on left -



35 714 970-90 0010
Rough for wall-mounted
faucet spout on right -

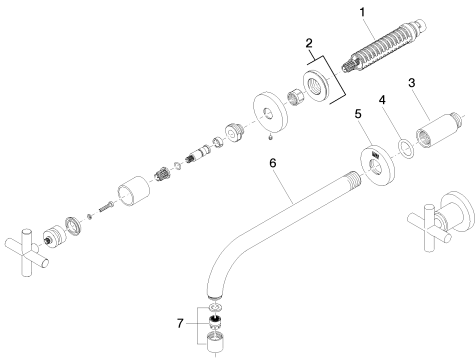


Sink - Tara.

Wall-mounted three-hole lavatory mixer without drain - black matte

Article number: 36 717 892-33 0010

Spare parts list



Number	Item Number	Designation	Number of units
1	90 90 03 157 00 90	Ceramic cartridge clockwise-closing -	2
2	36 310 892-33	Volume Control - black matte	2
3	09 24 03 081 10 90	Extension -	1
4	09 14 10 026 90	Washer -	1
5	09 27 22 503-33	Escutcheon - black matte	1
6	04 28 22 105 10-33	Outlet - black matte	1
7	90 23 01 019 02-33	Aerator - black matte	1