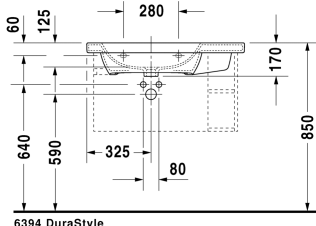
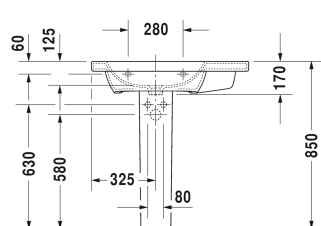
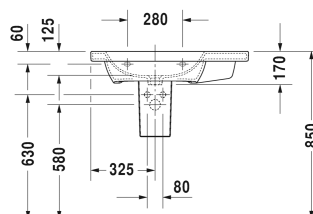
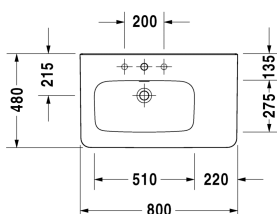


DuraStyle Furniture washbasin asymmetric # 2325800000 / 2325800030

< 31 1/2" Inch >



6394 DuraStyle

| Furniture washbasin asymmetric | Dimension | Weight | Order number |
|--|------------------------|---------|--------------|
| with faucet deck, bowl on left side, underside fully glazed, hardware included, wall-mounted, 31 1/2" Inch | | | |
| Colors | | | |
| 00 White | | | |
| Variant | | | |
| ● with overflow | 31 1/2" x 18 7/8" Inch | 49.4 lb | 2325800000 |
| ●●● with overflow | 31 1/2" x 18 7/8" Inch | 49.4 lb | 2325800030 |
| Infobox | | | |
| Washbasin is not ADA compliant in combination with pedestal, siphon cover or metal console | | | |
| Sanitary ceramics with the special WonderGliss surface finish will remain clean and attractive-looking for a long time to come. When ordering WonderGliss please add a "1" as eleventh digit to the model number. | | | |
| Accessory for ceramics | | | |
| Push button drain assembly for washbasins with overflow | 2" Inch | 0.8 lb | 005052 |
| Siphon for washbasin with outlet pipe 1 1/4" | 1 1/4" Inch | 1.3 lb | 005026 |

All drawings contain the necessary measurements which are subject to standard tolerances. They are stated in inch & mm and are non-binding. Exact measurements, in particular for customized installation scenarios, can only be taken from the finished ceramic piece.